

Australian Population Association Conference 2012

Kin & Care



Bruce Gregor

Financial Demographics

6 December 2012

“Applied Demography”

Current issues for Kin & Care

- **Aged Care**
 - Changes to Accommodation Contribution
 - Encouragement of staying in the “Home”
- **National Disability Insurance Scheme**
 - Identification of and payments to Carers
- **Paid Parental Leave**
 - Effect on Grandparent “child carers”

Kin & Kinship

- From Anthropology:
 - “Consanguineal” kinship (related by blood)
 - “Affinal” kinship (related by law/marriage)
- Mathematical model projection of “blood” related generations
 - Cohort Mortality, ALT historical tables, 25yr trend improvement from ALT 2005-07 onwards
 - Age Specific Fertility, No change from 2011 onwards
- Impact of changing fertility and mortality

Kinship Relationships

Current focus of research	Other Kin which could be modelled
Grandparent Parent Child Grandchild	Husband, Wife, Partner Sisters, Brothers “Step” relatives Aunts, Uncles

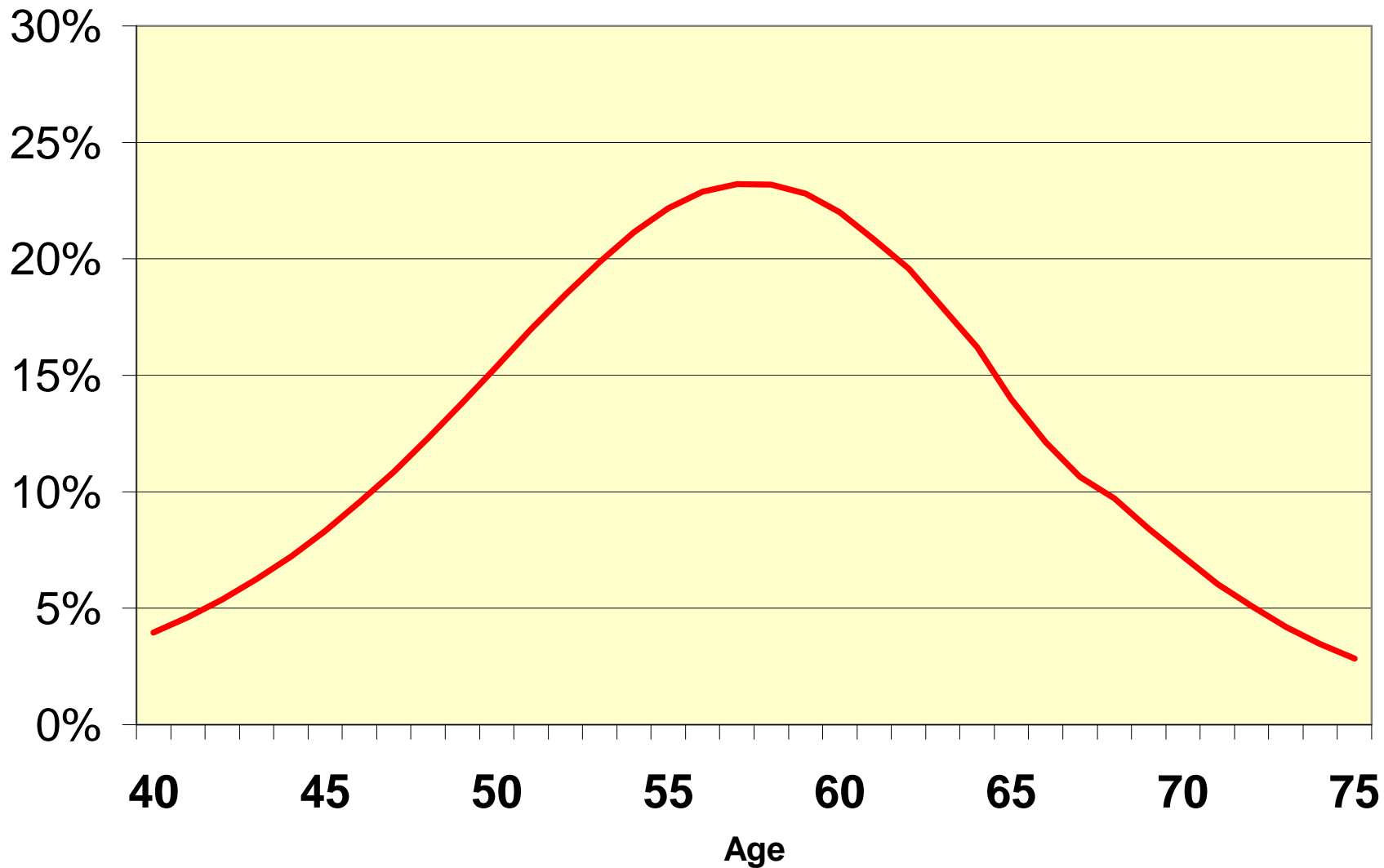
Model Results for Kinship relationships for 2011 Population

Grandparent	4,216,784
Parent (of child of any age)	10,949,130
Child (of any age)	17,278,893
Grandchild (of any age)	9,766,646
No Living Kin	345,000

Note: Some of these Kinships may relate to persons overseas

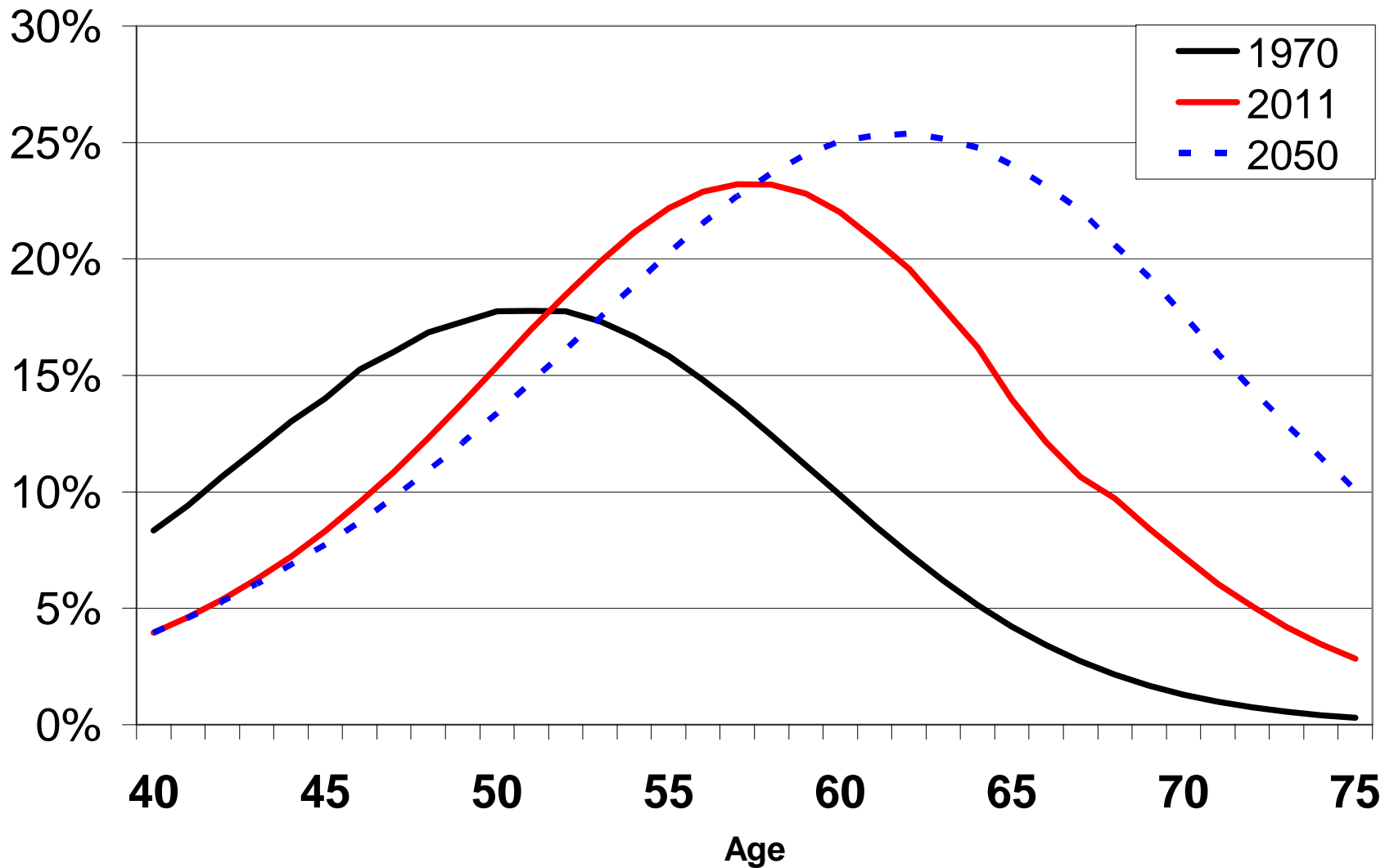
Multiple Kinships

2011 - Probability a person has
Parents living and is also a Grandparent

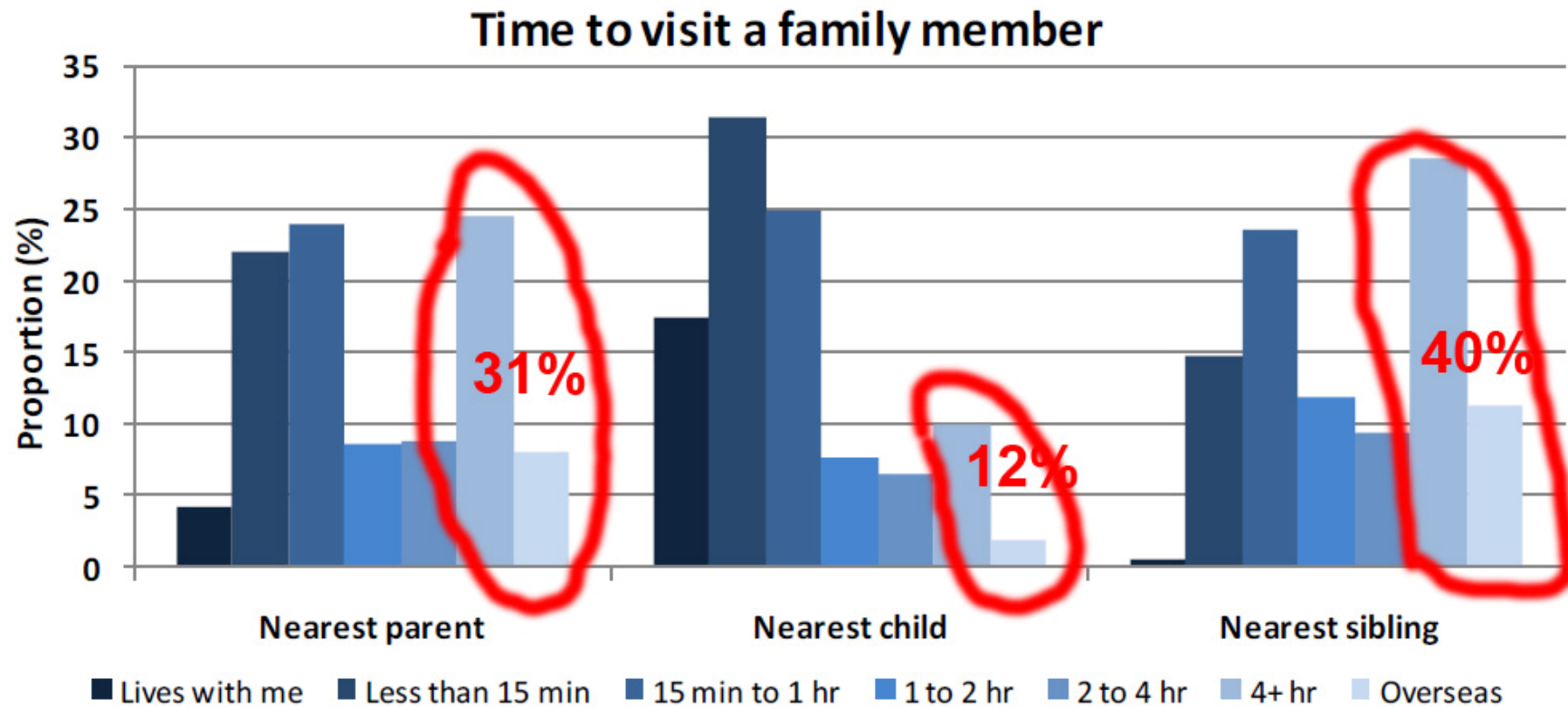


Changes in Multiple Kinship

Probability a person has Parents living
and is also a Grandparent



Proximity of Older People to Kin



Red figures highlight Kin Overseas or at least 4hrs travel away

Source: Heather Booth & Maria Pilar Rioseco Lopez - SNAP ANU & National Seniors
September 2011

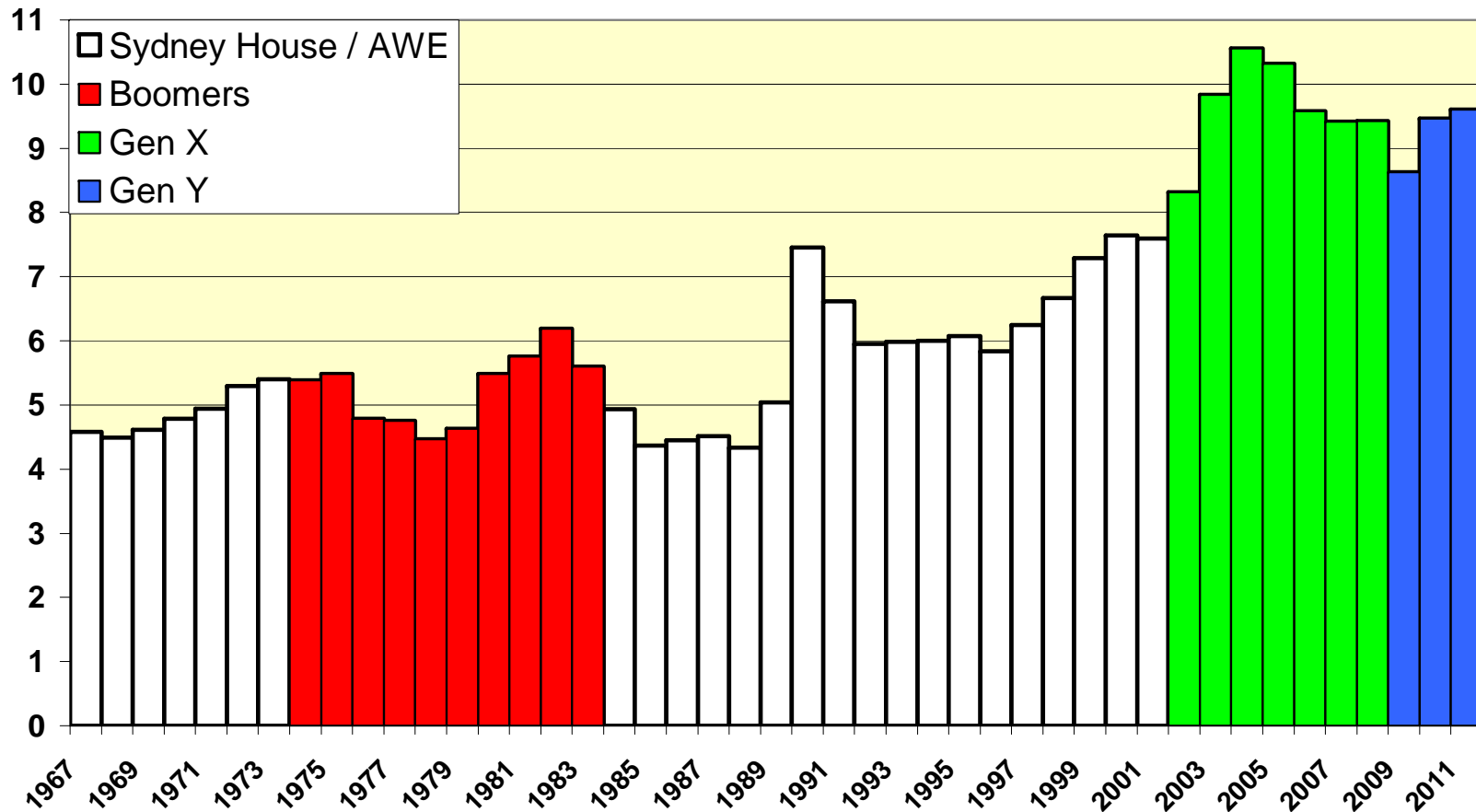
Trend in Multi-generation Households

Extra Family in House Relative to Census Reference Person	2006 Census	2011 Census	Increase %
Grandparent's family	778	1,005	29%
Mother's/father's family	51,405	61,559	20%
Brother's/sister's family	8,086	11,897	47%
Son's/daughter's family	26,097	40,619	56%
Grandchild's family	419	725	73%
Other related family	3,169	4,132	30%
All Related Families	91,960	121,948	33%
All Households	8,071,907	8,761,278	9%

House Price as Multiple of Annual Pay

Generations buying their First Home

House Price
Mult of AWE



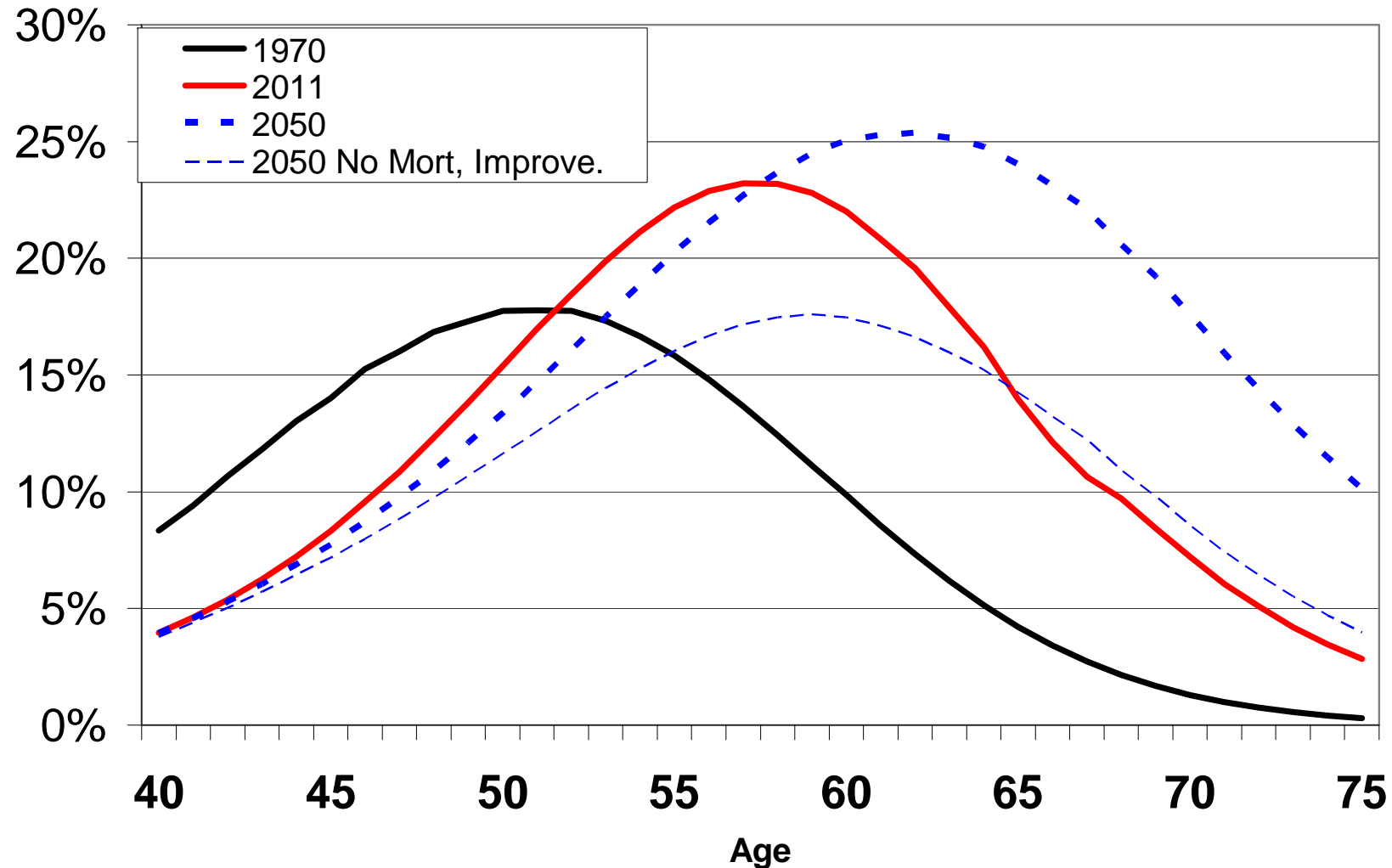
Ideas for Future Research

- Extend Kinship model to Partners, Step Children and Siblings
- Questions in 2016 Census?
 - Number and Ages of Parents Living Overseas
 - Kinship Status of Person provided with Voluntary Care
- Housing and Infrastructure implications of caring for elderly at home

Appendices

Changes in Multiple Kinship

Probability a person has Parents living
and is also a Grandparent

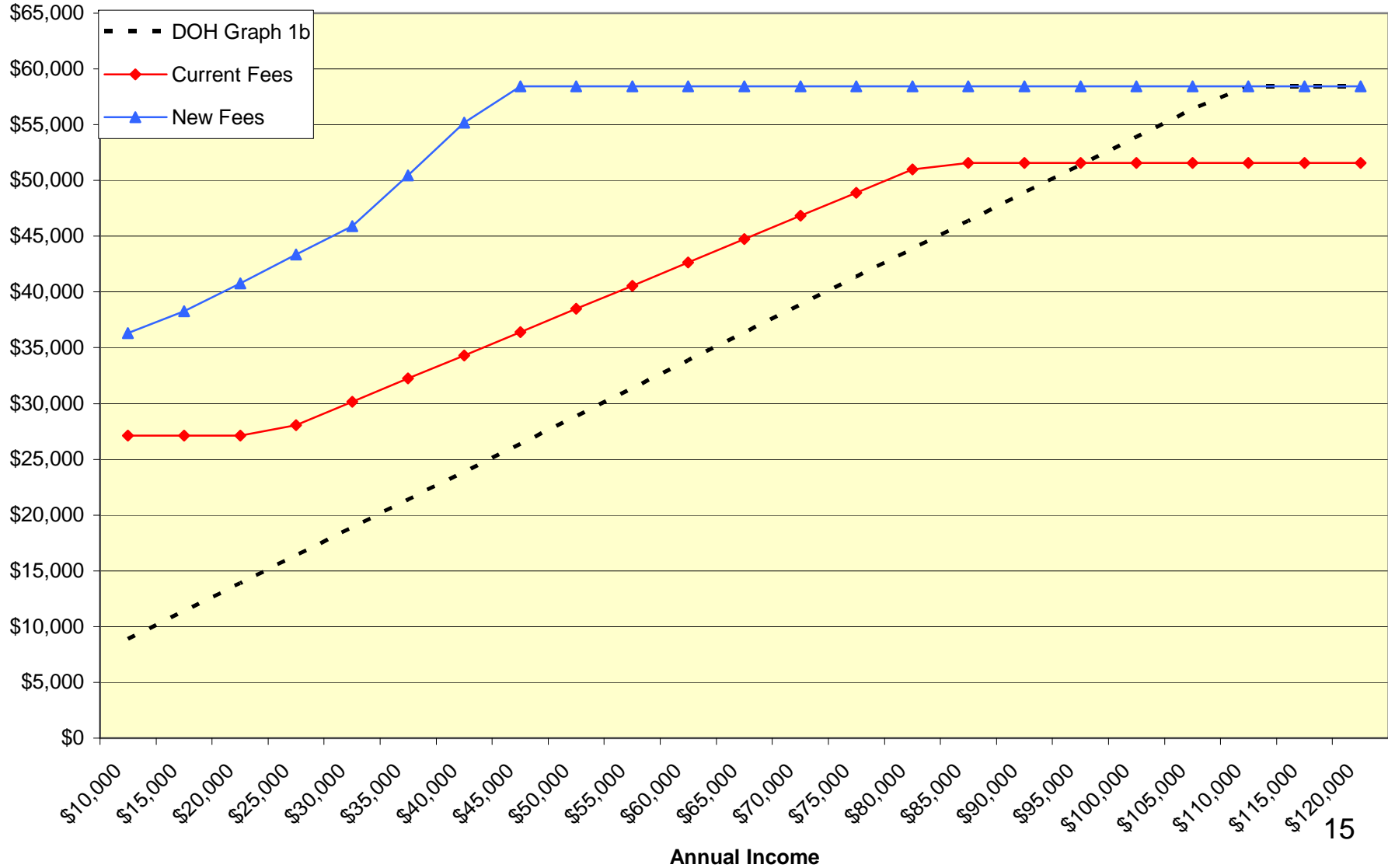


Number of People who have Parents living and are also a Grandparent

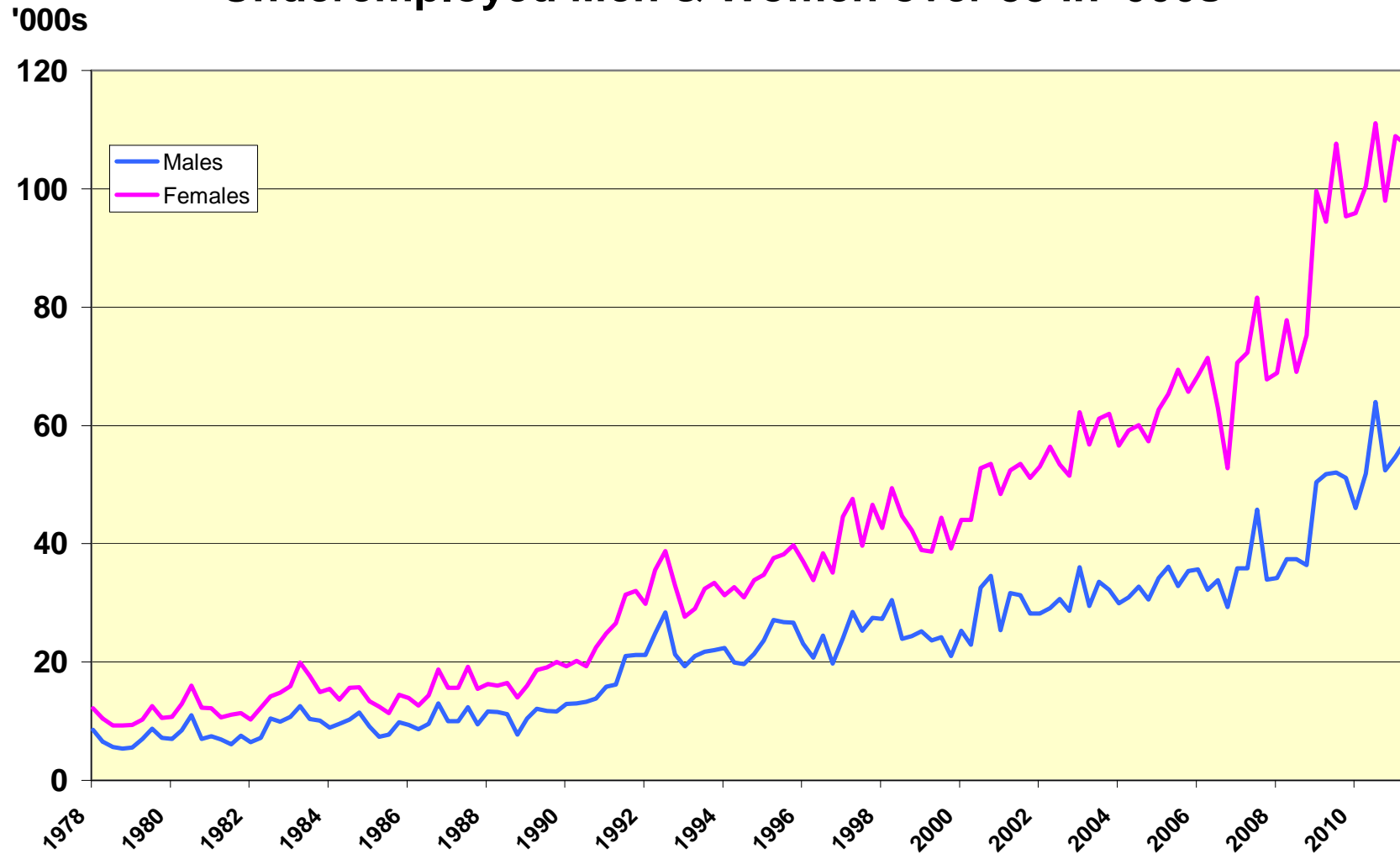
Year	Number of People with this Kinship	% of Total Pop.
1970	505,112	4.0%
2011	1,284,992	5.8%
2050	2,462,939	7.3%

Aged Care Accommodation

Annual Charges from 2014



Underemployed Men & Women over 55 in '000s



Older Person Income Gaps \$pa 2012

